



VIA MOTIF

Selected Installations





The Ritz-Carlton Yacht Collection, *Evrima*

We worked with The Ritz-Carlton Yacht Collection team over 2 years to design custom accessories with a sleek, modern feel in mixed textures and muted earth tones. With every single detail conceived to enhance the guest experience, this intimate and luxurious yacht is as much a destination as the ports it visits.



Minibar



Living Area





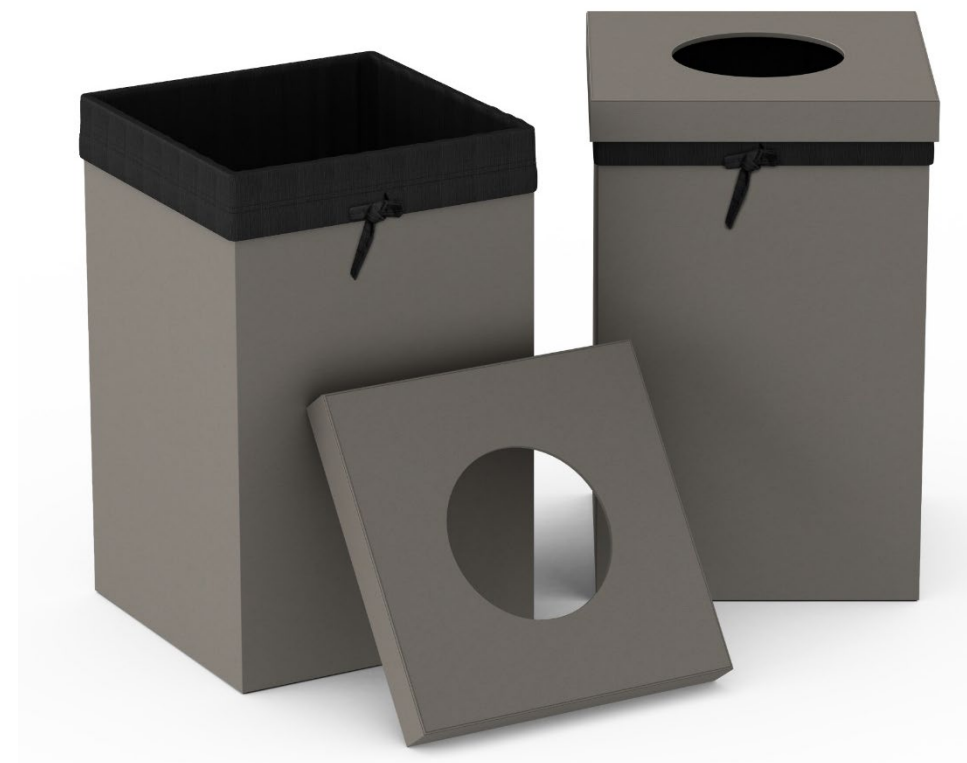
Guest Bathroom



Laundry Return Box



Hamper





The Ritz-Carlton Yacht Collection, *Evrima*



Pool and Spa





Mandarin Oriental Palace, Luzern

Working with the GM and his team, we designed over 50+ custom accessories for this exquisite property. Varying design by room type, we imagined and incorporated bespoke yet nuanced detailing to ensure every single piece was truly one-of-a-kind and intimately connected to its space.



Guest Bathroom



Guest Room: Desk Area



Guest Room: Bedside



Guest Room: Foyer and Closet Area



Guest Room: Minibar



Guest Room: Sitting Area





Montage Big Sky

To complement the property's modern mountain design and timeless palette of regional woods and stones, we created custom guest room and bath accessories in natural wood, black sand resin and leather match, blending a variety of unique and earthy textures and tones.



Guest Bath

Bath accessories were crafted from a variety of materials, including natural wood, black sand resin and our proprietary woven wave textured leather match.



Guest Room

We explored a variety of finishes with Montage before developing this distressed, saddle leather match, so perfectly suited to the character of this boutique property .



Four Seasons Fort Lauderdale: Spa

White-washed Sungkai accessories, perfectly sized for their spaces, lend warm, elegant touches to this spa dressing room. Every single detail, from the configuration of the compartments on the amenity caddy to the brass tone of the pump dispenser nozzles to the font used for labelling on the bins, is thoughtfully and artfully conceived. The substantial weight of Via Motif Resin ensures that guest impressions of impeccable quality and world-class luxury are confirmed with every interaction.



Four Seasons Fort Lauderdale: Lobby

Topaz Broadweave Leather Match fits seamlessly into the sophisticated modern stylings of the lobby areas, lending texture and warmth to the space. Amber Gloss Resin accents, inspired by old-fashioned apothecary jars, complement the topaz and brass elements while offering a rich point of contrast against the pristine white marble.



Four Seasons Fort Lauderdale: Pool Area

Our stacking food service trays and carrier allows for easy and elegant delivery of poolside meals and snacks. Our Plaited Polyweave finish is well suited for the moist, outdoor environment while the vibrant blue trim evokes the pool umbrellas and chaise lounges as well as the sparkling ocean waters just steps away.



Our Ivory Plaited Polyweave bins/hampers and Beach Sand Resin accessories add elegant, organic touches to the gorgeous pool area. The soft, natural hues and unique textures call to mind the spectacular surroundings and youthful spirit and energy of the property.





Rosewood Le Guanahani, St. Barth

We created guest room and guest bath accessories for this charming property hidden away on its own private peninsula. The clean lines, soft tones and casual elegance of our pieces contribute to the laid back, yet luxurious, vibe that this island gem has perfected.



Guest Room

Mixing materials, tones and textures contributes to the property's one-of-a-kind sensibility and further evokes the island spirit. We designed custom forms to allow these accessories a perfect fit in their spaces and created the nightstand organizer to elegantly house the remotes for the tv, fan and a/c. The vibrant blue Pantone is the property's signature hue.



Guest Bath

Our Natural Pandan is crafted from the Pandan leaf, a completely renewable resource indigenous to Indonesia. In addition to being a beautiful, sustainable finish, it offers incredible design flexibility (available in almost any color) and value.





Hard Rock New York

Hard Rock New York celebrates the vibrant rhythm of the city, with floor to ceiling windows, elegantly appointed guestrooms and unique musical touches. Our Faux Shagreen Leather Match and hand cast Resin accessories are sleek, sophisticated, modern and edgy, in keeping with Hard Rock's unique spirit, confidence and style.



Guest Room

Our Champagne Faux Shagreen finish lends a soft, neutral tone that blends seamlessly into the guest room décor, with gold flecked that can't help but catch the eye.



Guest Bath

Our hand cast resin is available in any color and design, including artful combinations imagined by the skilled artisans at our own factory in Indonesia.





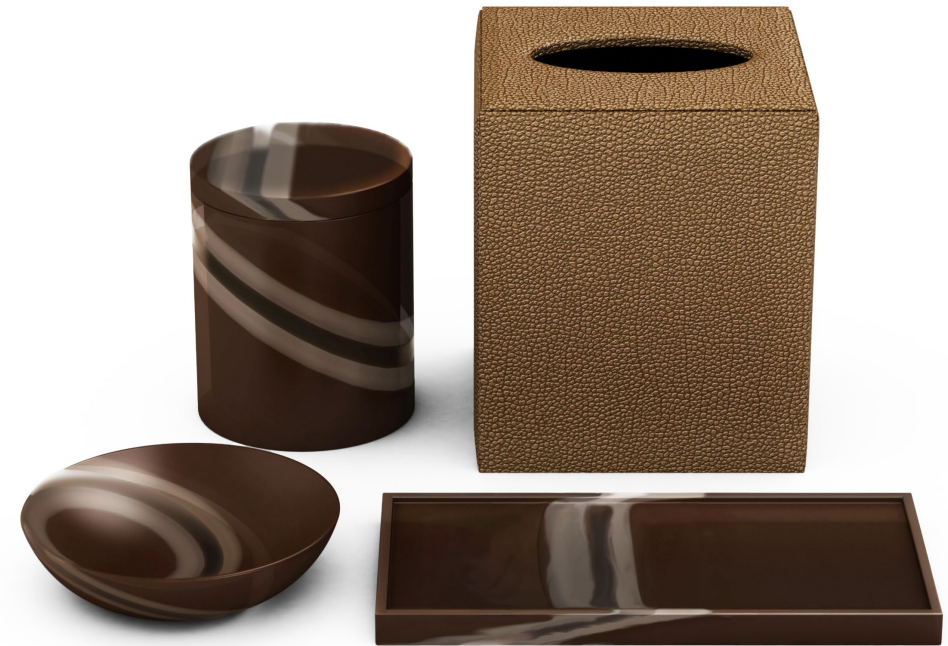
Hard Rock Marbella

Hard Rock Marbella blends modern design with a hint of rebellion, along with subtle nods to the 1960 style that defined Costa del Sol. Our Faux Shagreen Leather Match and hand cast Resin accessories are sleek, sophisticated, modern and edgy, in keeping with Hard Rock's unique spirit, confidence and style.



Guest Bath

We developed "Buffalo Horn" Resin specifically for Hard Rock Marbella, inspired by the eye glass frames of a Corporate Design team member.



Guest Room

This custom Copper Faux Shagreen Finish complements the celebration of color in the guest rooms.





The Ritz-Carlton, Amelia Island

Drawing on the breathtaking coastal beauty and southern charm of this iconic property, we worked with the management team to design accessories inspired by the surrounding landscape in hue, texture and pattern.



Guest Bath

The soft neutral hues of our custom, two-toned Faux Shagreen finish evokes the sand and sea. We customized forms to ensure perfect fit and optimal function.

Two-Tone Custom Colored Faux Shagreen Finish (pyramid trash can with liner, canister without lid, bath tray, tissue box cover)



Clear Resin soap dish

Guest Room

In addition to guest room accessories in our Faux Shagreen finish, we also handcrafted beautiful wood luggage racks, notable for their clean elegance and exquisite (contract) quality.

Two-Tone Custom Colored Faux Shagreen Finish (dual recycling bin with liners, remote control holder and ice bucket)



Sungkai Wood luggage rack



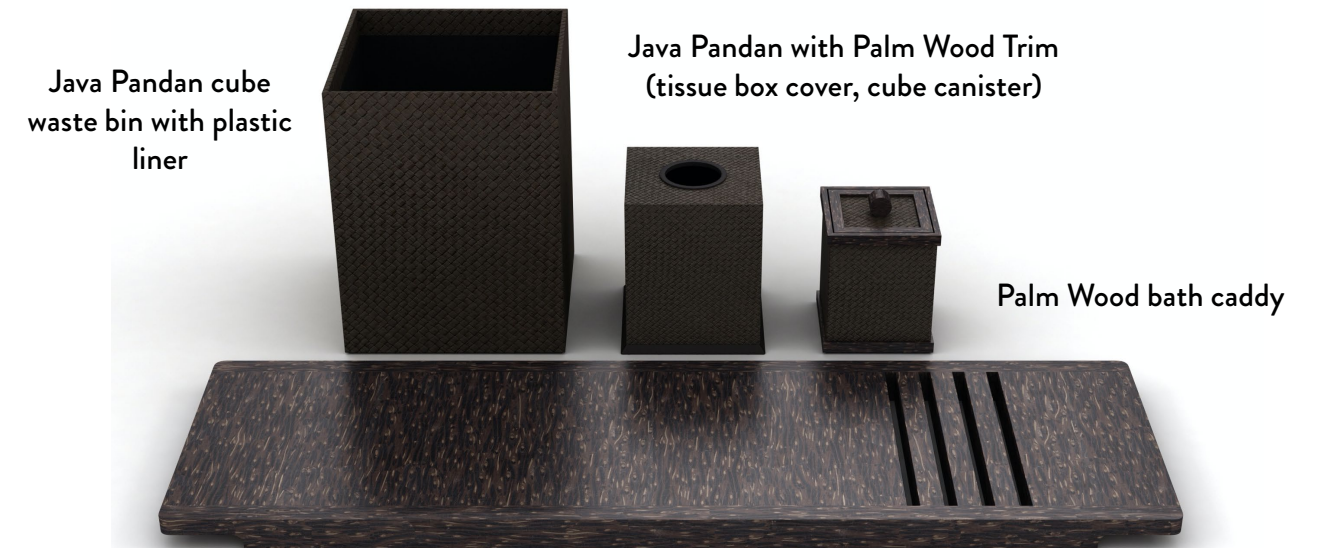
The Setai, Miami Beach

Working with the luxe textures and deep brown tones of Palm Wood and woven Pandan, we created sophisticated room and bath accessories in keeping with the property's Far Eastern design aesthetic and the Asian traditions of simplicity and elegance.



Guest Bath

The woven Java Pandan pieces are hand crafted from the leaf of the same name, indigenous to Indonesia, sustainably harvested, expertly woven and trimmed in Palm Wood by the skilled artisans at our company-owned factory in Indonesia. The custom bath caddy, crafted from the same richly-grained Palm Wood, serves as a luxurious invitation to revel in the serenity of the space.



Guest Room

We worked with the property to develop these unique, custom pieces for the Asian inspired guest suites. Their graceful forms, clean designs and exquisite craftsmanship elevate the guest experience and form lasting impressions.





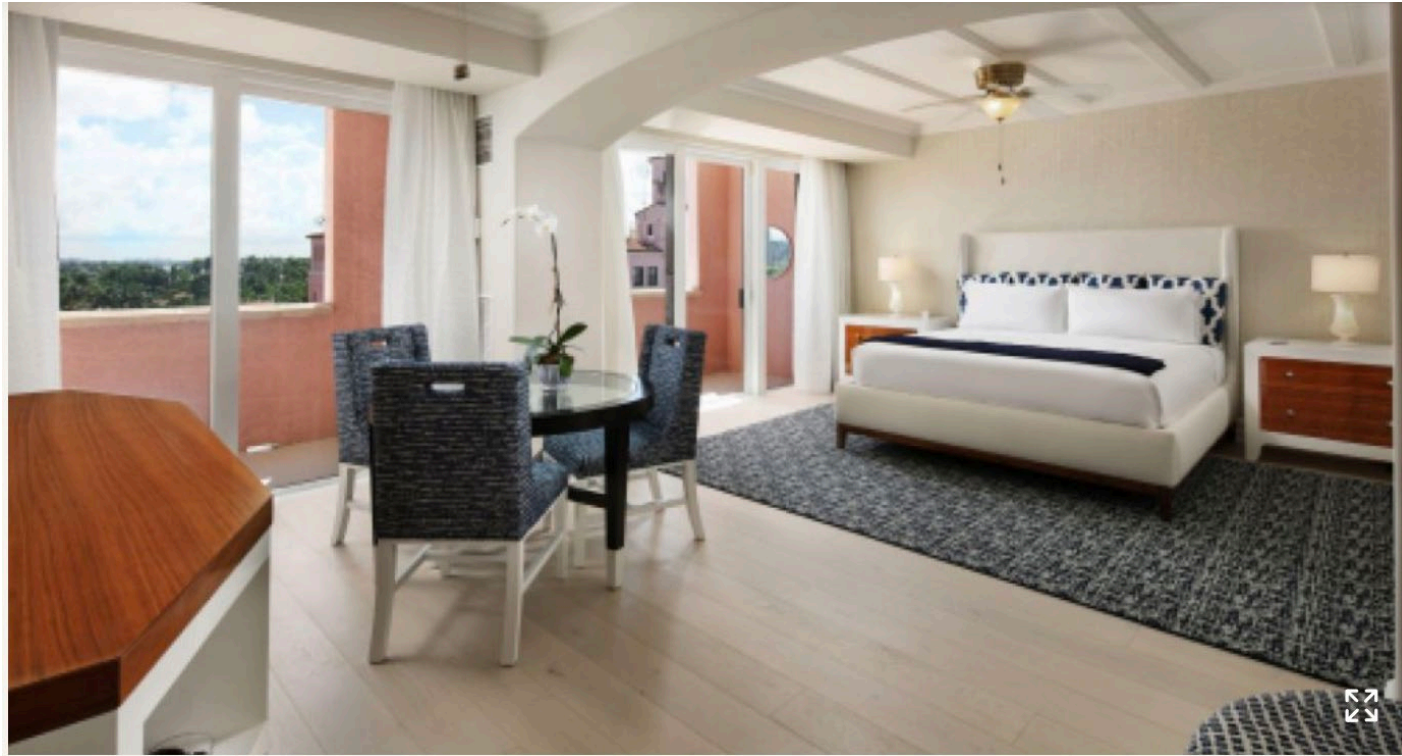
The Tower at The Boca Raton

We worked with the team at this iconic property to develop accessories with a contemporary, coastal vibe. Our Natural Mendong with Bamboo trim evokes an effortlessly residential feel and contributes to the casual, yet luxurious sensibility of The Tower guestrooms.



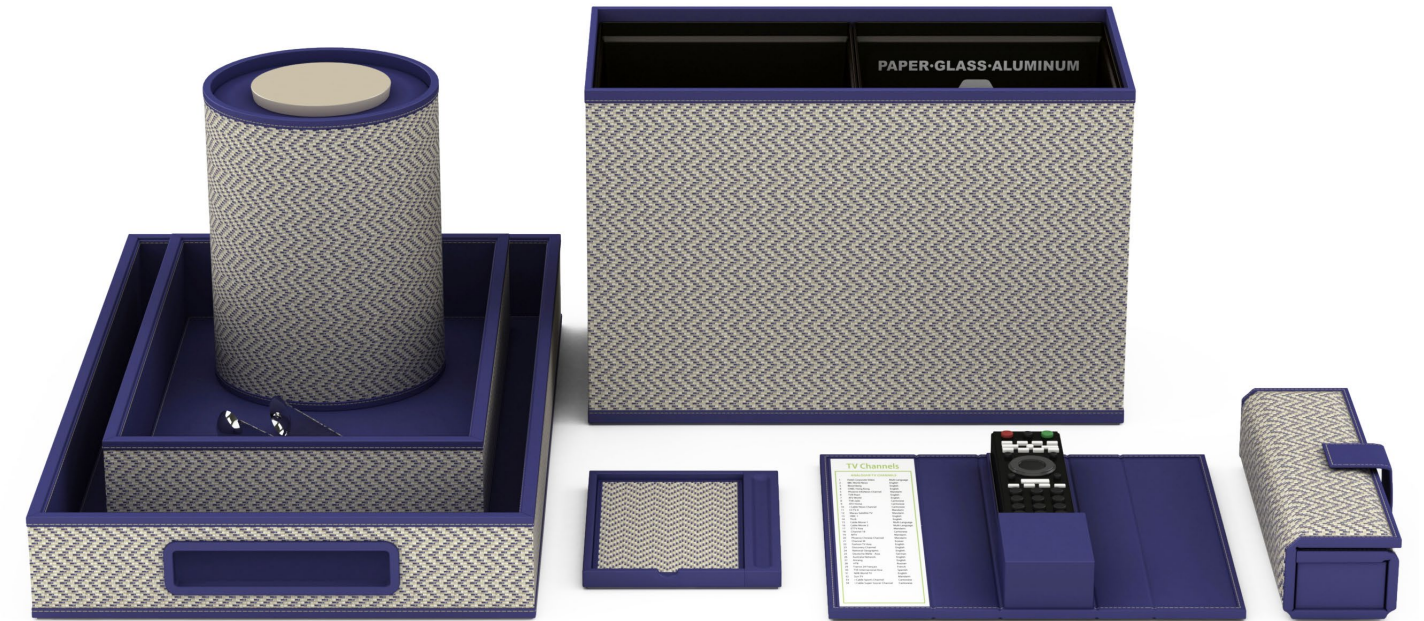
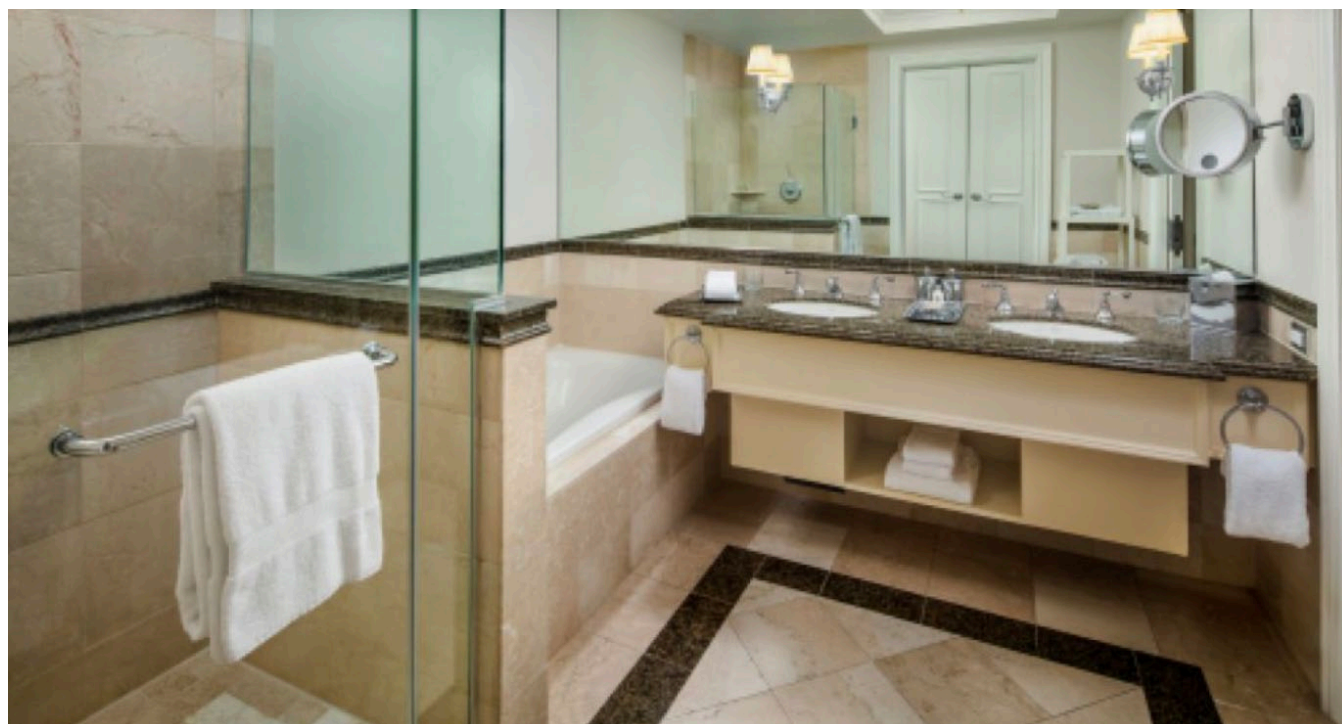
Our Natural Mendong material is crafted from Mendong grass, which is sustainably grown and harvested, and then hand loomed by the skilled artisans at our company-owned factory in Indonesia. Trimmed in Bamboo, these pieces serve as elegant, organic touchpoints well suited for the Tower's breezy, waterfront setting.



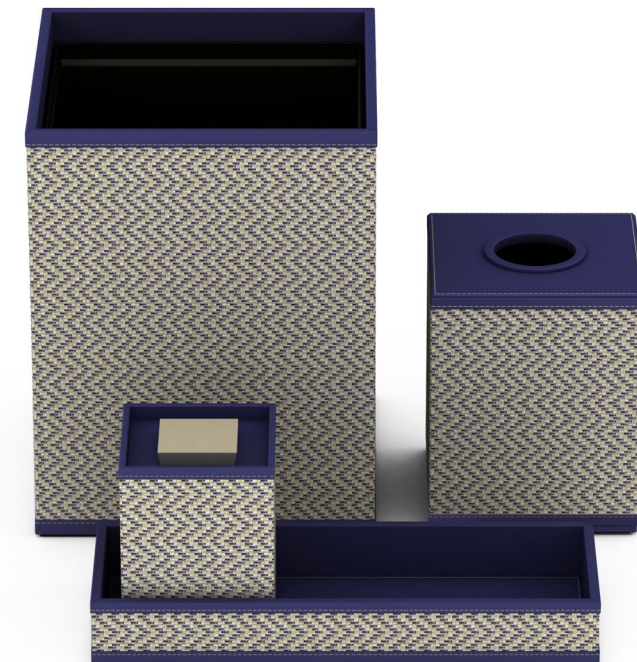


The Yacht Club at The Boca Raton

We developed guestroom and guest bath accessories to complement the blue tones and soft neutrals in these all-suite accommodations. Our hand loomed pieces, designed specifically for the Yacht Club, feature two toned (natural and richly colored blue) Mendong woven into a crisp, chevron pattern.



Our Chevron Mendong finish is crafted from Mendong grass, which is indigenous to Indonesia, sustainably grown and harvested, and then handloomed by our skilled artisans at our company-owned factory in Indonesia. The unique blue trim was specifically conceived to reflect the breezy, nautical sensibility of these elegant waterfront accommodations.





The Cloister at The Boca Raton

This iconic landmark, the original hotel building at the property, features grand architecture and rich history dating back to 1926. Our Natural Pandan accessories with Maroon trim accent the classic styling and modern furnishings, and contribute to the sophisticated and casually elegant feel of the newly transformed space.



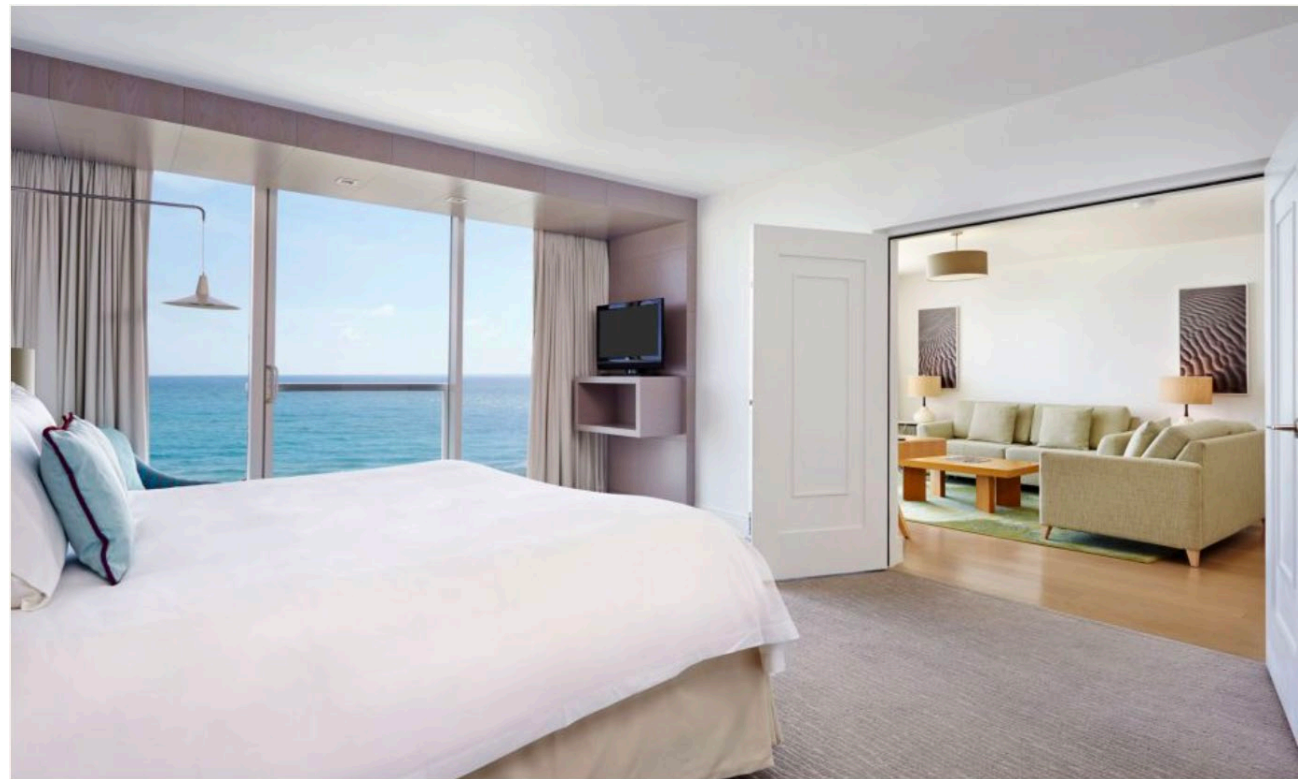
Our Pandan finish is crafted from the Pandan leaf, a completely renewable and sustainably harvested resource indigenous to Indonesia. Skilled artisans at our company-owned factory in Indonesia weave the Pandan by hand, applying the vibrant maroon Leather Match trim to create the unique pieces we developed specifically for The Cloister accommodations.





The Beach Club at The Boca Raton

We developed beautiful woven Pandan accessories in a soft, natural tone, accented with blue trim to complement The Beach Club's breezy beach side style and stunning ocean views.



Our Pandan finish is crafted from the Pandan leaf, a completely renewable and sustainably harvested resource indigenous to Indonesia. Skilled artisans at our company-owned factory in Indonesia weave the Pandan by hand, applying the custom blue Leather Match trim to create one-of-a-kind pieces perfectly suited to the sun-filled guestrooms of this beachside oasis.





Pendry Manhattan West

Pendry offers guests an airy, relaxed version of New York and its timeless sophistication. The clean lines and crisp elegance of our Wave Textured Leather Match accessories work beautifully in these stunning interiors, punctuating the warm, contemporary design and understated, California-inspired take on progressive luxury.



Guest Room & Bath

Our Wave Textured Leather Match is available in any color, included single tone (as pictured) or tone-on-tone. As a signature Via Motif collection, we hold stock of selected pieces at our warehouse in California, often allowing for "quick ship" delivery.

Black Wave Textured Leather Match
(cube recycling bin, cube storage bin,
tissue box cover, cube canister)



Black Sand Reis soap dish



ette hotels

As an emerging brand, ette hotels is focused on ensuring that every single design element has meaning and purpose, conveying its identity and enhancing the guest experience. We developed these custom Lacquer and Leather Match accessories inspired by the brand's fresh style and crisp, artful, vibe.



The lemon tree is an important symbol of ette's brand identity, symbolizing love, light and fortune, and evoking joy, optimism and positive energy. We incorporated this image into select accessories, allowing our pieces to help narrate ette's unique story.

Guest Bath

Custom Pantone Lacquer (amenity box and tissue box cover with silkscreen logo)



Custom Pantone Leather Match cube waste bin with embossed logo and plastic liner

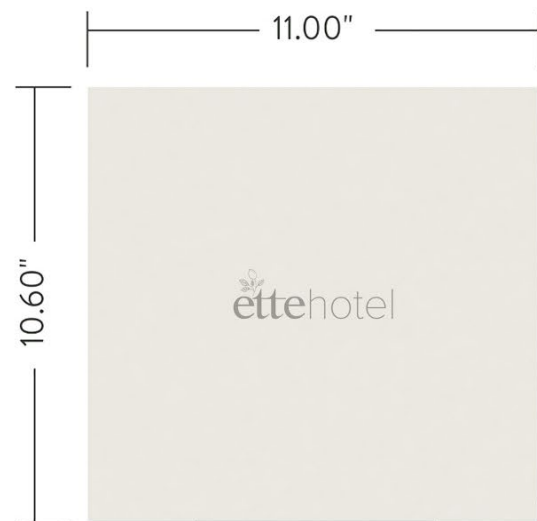
Custom Pantone Resin square soap dish with logo

Guest Room

Custom Pantone Leather Match (tapered dual recycling bin with embossed logo and plastic liners)



Custom Pantone Lacquer (ice bucket, room service tray with logo, coffee condiment tray)



plan



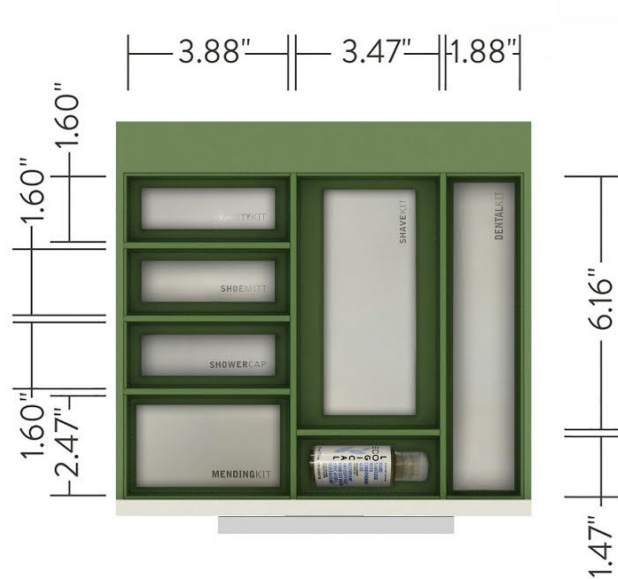
front elevation



detail divider box



top elevation



detail divider box drawer



illustration

Four Seasons, Mauritius



We worked with the team at the property to create accessories with an organic, luxurious sensibility. We developed this custom Broadweave Mendong with Sungkai trim finish to add textural elements and contrasting tones that complement the bathroom décor and surrounding outdoor scenery, which is so much a part of the space.



The Ritz-Carlton, Aruba



The Ritz-Carlton, Aruba chose our Pearl White Leather Match bath accessories for their 5-star property designed to reflect the vibrant energy and relaxed charm of the island. Our pieces evoke indulgence, with their subtle sheen and exquisite craftsmanship, enhancing the sense of luxurious comfort for which the property is known.





Baker's Cay Resort (Curio Collection)

Baker's Cay selected our Natural Pandan finish with wood accents, perfect for the relaxed beachy vibe of the property. The soft ivory tone contrasts beautifully with the various woods in the guestroom / guest bath, while the woven texture adds a soft, organic touch.



Our Natural Pandan is crafted from the Pandan leaf, a completely renewable resource indigenous to Indonesia. In addition to being a beautiful, sustainable finish, it offers incredible design flexibility (available in almost any color) and value.

Guest Bathroom



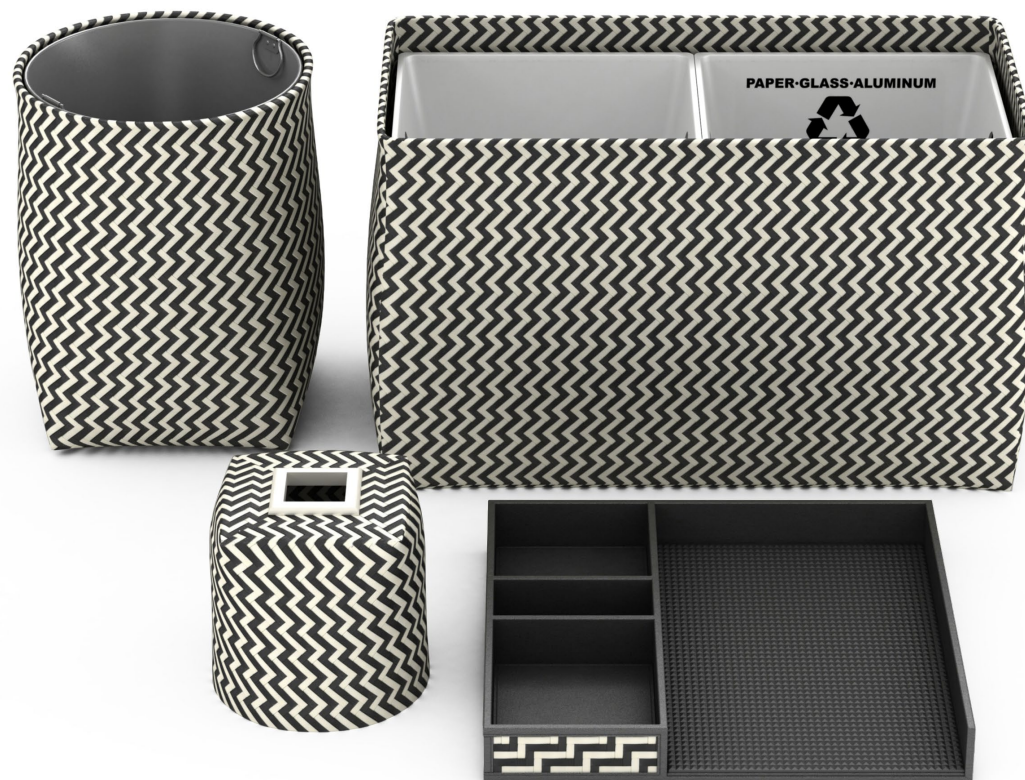
Guest Room





The Buenaventura Golf & Beach Resort Panama

This Autograph Collection property selected our Polyweave finish for guestroom and bath accessories, choosing a striking two-toned combination. Also available in single tones, our eco-friendly Polyweave is crafted from recycled polypropylene straps, which are hand woven into beautiful, organic forms by the skilled artisans at our company-owned factory in Indonesia.



Humaniti Hotel, Montreal

The team at Humaniti loved our Black Faux Shagreen Leather Match finish, but what sealed the deal for them was our exquisite craftsmanship and impeccable (contract) quality. They tested our samples rigorously and concluded that our craftsmanship, construction and overall quality stood out as superior against the many other options they considered.





Montage Healdsburg

To complement the contemporary aesthetic and environmentally conscious design of this transformative hideaway in the Sonoma wine country, we created guest room and bath accessories hand crafted in earthy, neutral tones in a mix of rich and unique textures.



Guest Bath

Combining materials and finishes across our many collections enhances the boutique, one-of-a-kind essence of Montage Healdsburg. Materials such as wood, woven Mendong grass and black sand resin contribute to the organic, luxurious warmth and charm of the property.

Java Broadweave Mendong with Black WT Trim waste bin, tissue box cover, canister

Nyatoh wood bath caddy with black sand resin bath salts container



Black Sand Resin amenity tray and soap dish

Guest Room

We worked with the property to develop a custom Faux Shagreen finish in a warm brown that compliments the case goods and in-room woodwork. Our Faux Shagreen finish is not only beautiful, but it offers incredible design flexibility (available in any color, including tone-on-tone options) and value as well.

Tone-on-Tone Custom Colored Faux Shagreen Finish

Dual recycling bin, desk blotter, note pad holder and custom-designed welcome card holder





Mandarin Oriental Bosphorous, Istanbul

We collaborated with the property's ownership group to design custom accessories for the guest rooms and baths as well as spa/public space areas . Our unique capabilities allowed us to create one-of-a-kind artifacts featuring organic textures, unique patterns and bespoke details. Every single piece captures the enchantment of the world's pan-continental city and evokes an authentic sense of place.



Guest Room



Java Metallic Leather
Match with Tonal
Silkscreen Pattern
(tissue box cover,
serving tray, console
tray, jewelry tray and
embossed logo
coaster set)

We silkscreened our Java Metallic Leather Match material to create soft, rich, elegant accessories that are unique and intuitive to their spaces. The tonal geometric pattern (similar to that found on the guest room rug) is just one example of the exquisite detailing that Via Motif offers.



Java Metallic Leather
Match with Tonal
Silkscreen Pattern
(magazine caddy, cylinder
waste bin, turndown tray,
desk blotter, notepad
holder, and remote
control holder)



Mandarin Oriental Bosphorous, Istanbul (continued)



Guest Bath

Working in black tones with our Lacquer, Resin and Leather Match finishes, we created beautiful bath accessories featuring a soft gray, silkscreened pattern that lends an artful flair perfectly suited to this spectacular property.

Black Lacquer with
Silkscreen Pattern
(tissue box cover,
amenity tray)



Black Leather Match
with Silkscreen Pattern
(pedestal trash bin,
cylinder trash bin,
amenity box)

Black Resin with
Silkscreen Pattern (bath
salts canister, square
soap dish)

Spa and Public Space Areas*

Our Palm Wood and metallic Topaz Broadweave Leather Match pieces contribute to the warm, organic luxury of the spa and public space areas.

Topaz Broadweave Leather
Match – Spa area
(hamper, fruit platter,
capsule tray, cube canister)



Palm Wood – Spa Area
(small candle lantern,
quadruple pyramid
amenity tray)

Java Broadweave Leather
Match – Public Space
(rectangle tissue box
cover, check-in folder)

* Reflects a small selection of items for the spa and public space areas.